

Matching library card available at all 29 locations.

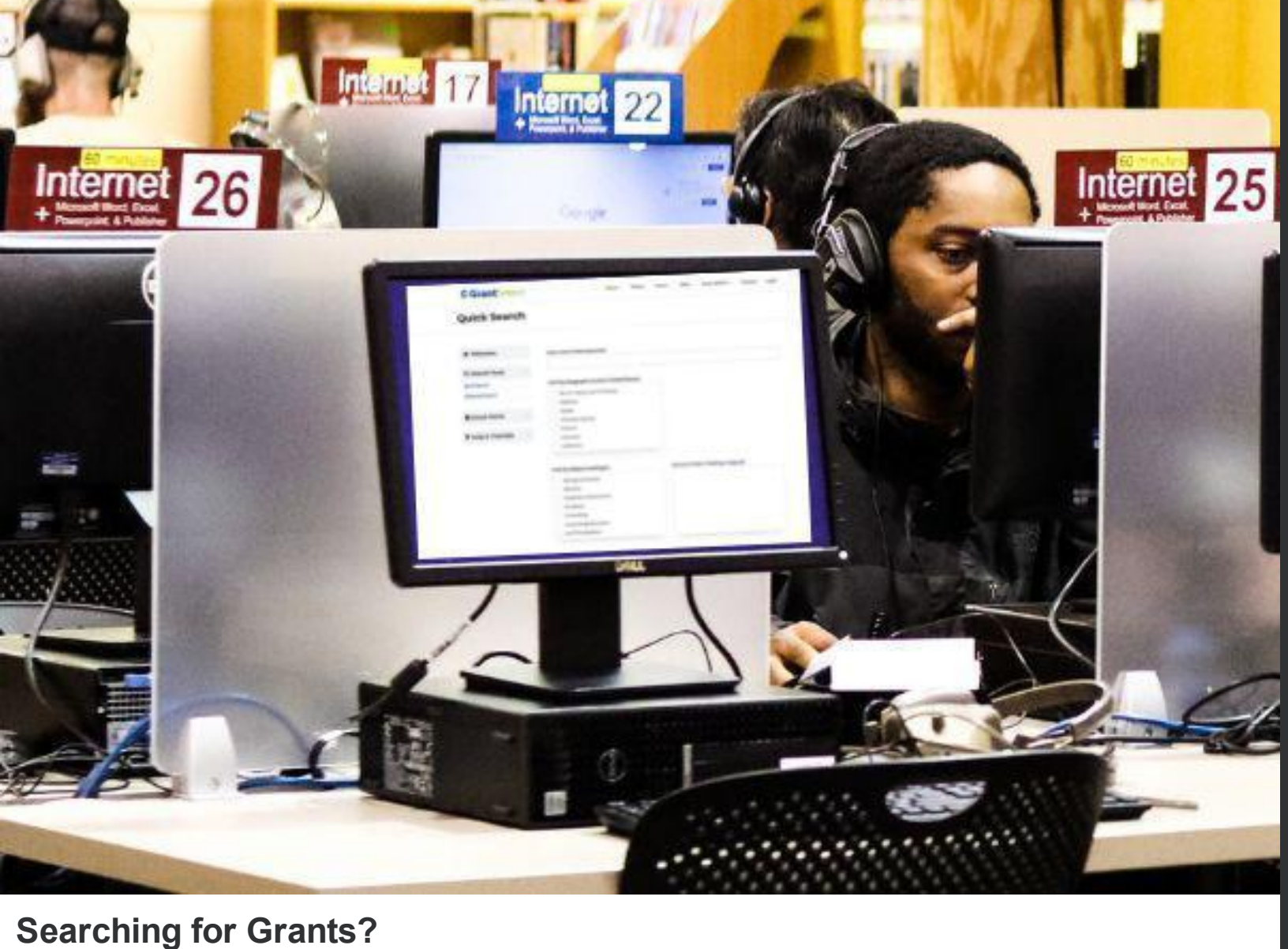


## Grow a Reader

Reading, Talking, Singing, and Playing with your child every day are simple but powerful activities that prepare your young child to be ready to learn how to read!

Timberland Regional Library and Nikki McClure, a local artist and children's book author, have teamed up to create an early learning reading engagement activity for you and the young children in your life. It's a beautiful keepsake piece containing Nikki's artwork.

Pick one up at any TRL library, and while you're at it, get your child their first library card with a matching design.



## Searching for Grants?

Driven by a single question: "How do I find grants?" Let us help you with GrantSelect.

Access GrantSelect for **FREE** with your TRL library card plus PIN through our unique public access portal. [TRL is 1 of 19 locations nationwide with public access to GrantSelect.](#)

What is GrantSelect? A searchable database containing the detailed requirements of over 20,000 funding sources for grants provided by over 5,000 organizations and foundations.

The clean, user-friendly interface offers a variety of filters, including keyword, subject, program type, sponsor, deadlines, and geographic location, to search for possible grant funding.

Sixteen areas of interest include:

- Agricultural Programs
- Arts and Culture
- Humanities
- Biomedical and Health Care
- Children and Youth
- Community Colleges
- Community & Economic Development
- Conservation & the Environment
- Faith-Based Grants
- Fellowships
- PreK-12 Grade and Adult Education
- International Programs
- Operating Grants
- Scholarships
- Special Populations
- Research

Search from home or on a computer in your local library today to find your next grant!



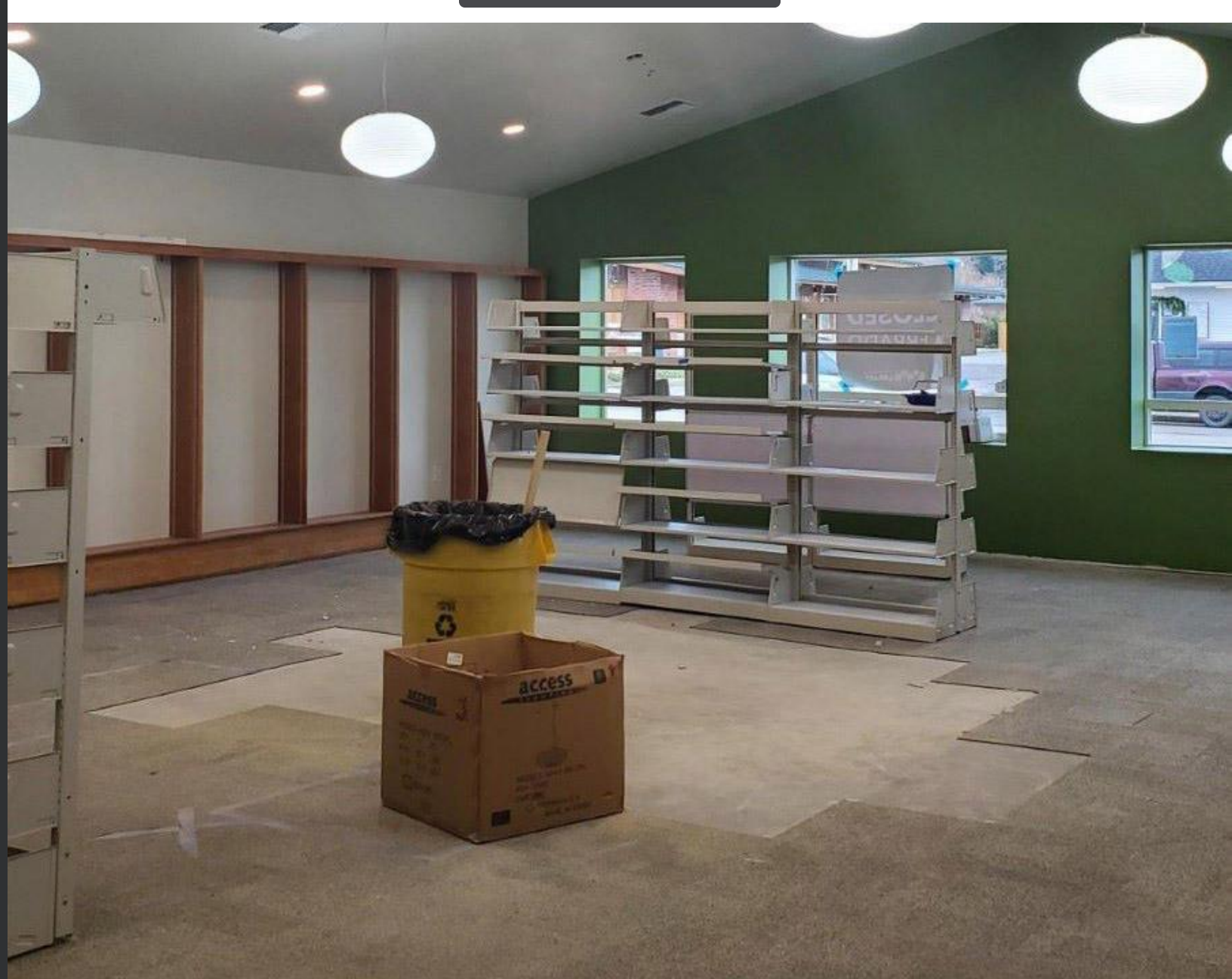


## Need Tax Help?

This year [AARP Foundation Tax-Aide](#) will take place at some Mason, Pacific, and Thurston County branches beginning in February. Tax forms will be available at all branches after they are received from the IRS.

Library staff are also available to help locate forms by email at [asklib@trl.org](mailto:asklib@trl.org) or chat at [TRL.org](https://www.trl.org) Monday-Saturday, 9am-5pm.

**Tax Help in the Library**



## McCleary Refresh Update

On schedule to open at end of the month.

Closed since the end of October, our facility staff has been working hard installing **NEW**:

- lighting and cabinetry
- paint and flooring
- Library Manager office
- furniture and shelving

Follow our progress on our [Instagram stories](#).

Reopening information coming soon on McCleary Facebook page and on [TRL.org/Locations/McCleary](https://www.trl.org/Locations/McCleary).

**McCleary Facebook**



## VOX Books: Books that Talk!

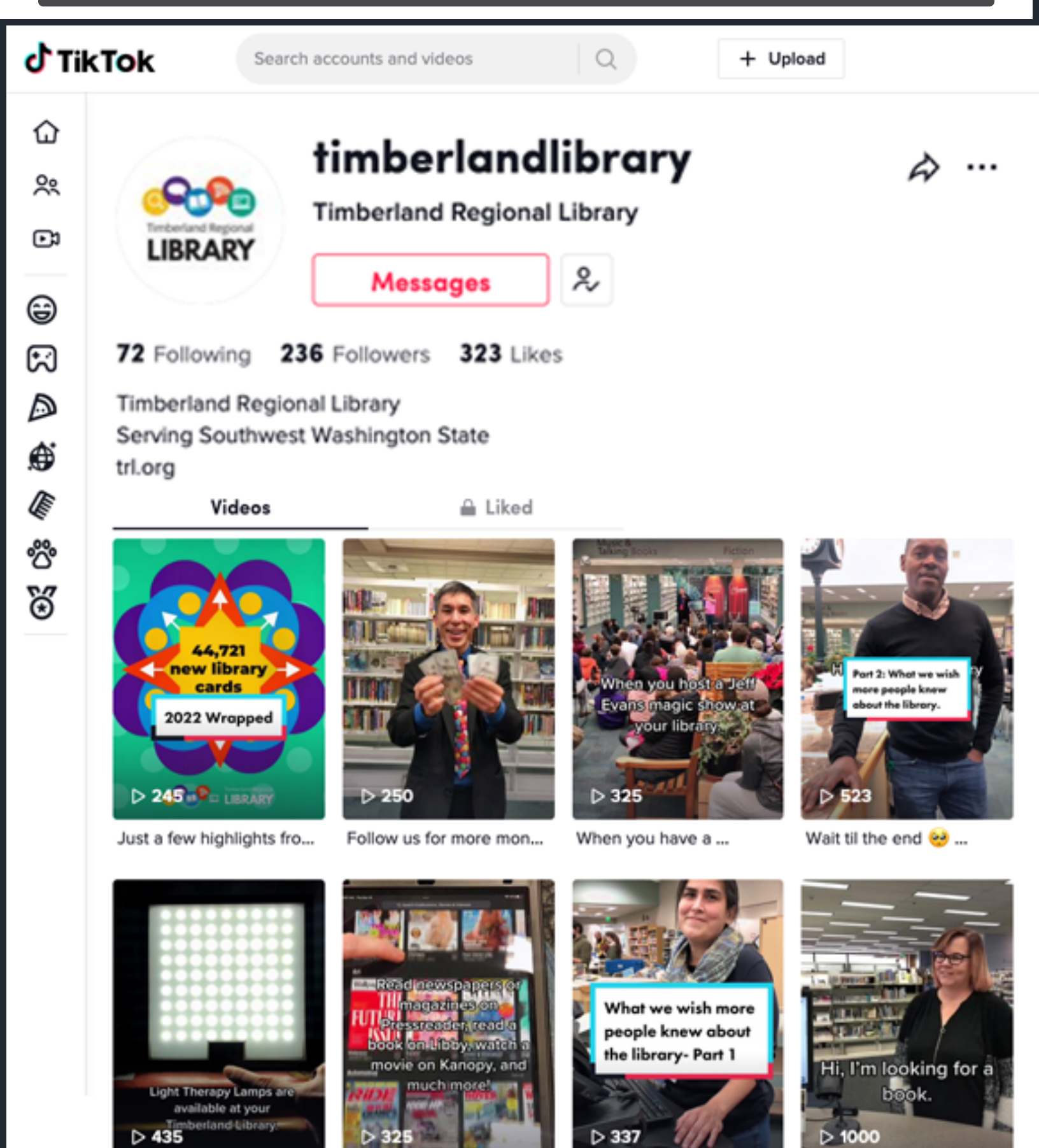
Studies show that read-alongs improve reading comprehension.

VOX™ Books capture children's attention by combining picture books with audio recordings. It makes learning and literacy development exciting!

Inside the front cover of each VOX book is a permanently attached VOX™ Reader which reads the book aloud.

Children simply press a button to listen (and learn!) while they read. Watch a [video demonstration](#) provided by Library Ideas.

**Find a VOX Book Today!**



## New on TikTok

We are excited to announce that TRL is officially on TikTok!

TikTok is a fun, informative, and entertaining platform, and we are excited to be a part of it! Start Following us today at [@timberlandlibrary](https://www.tiktok.com/@timberlandlibrary).

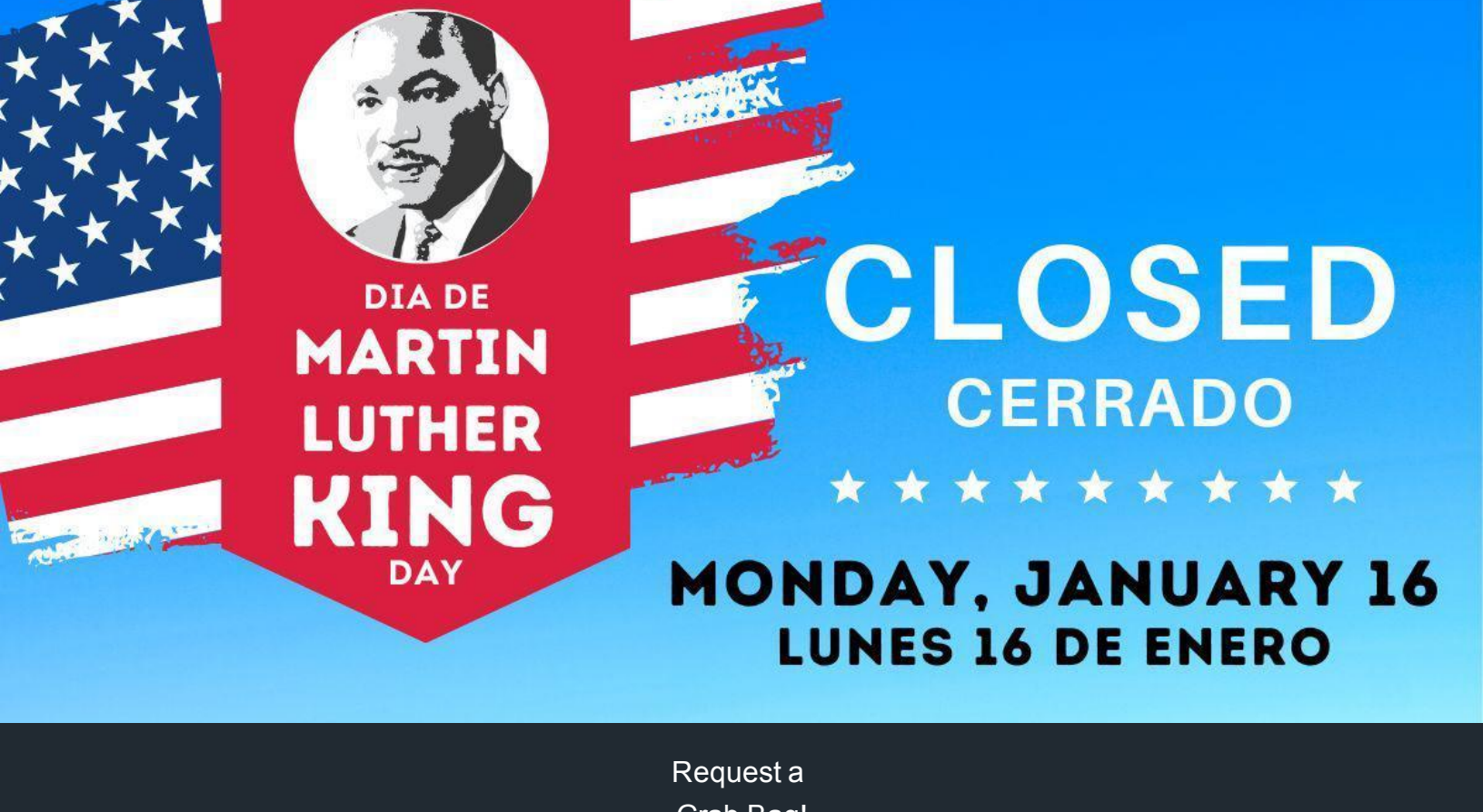


Be sure to leave us comments and let us know how much you love your library on our TikTok!

Three of our branches have their own TikTok accounts as well and you can follow:

- [Amanda Park TikTok](#)
- [Salkum TikTok](#)
- [Naselle TikTok](#)

Watch TikTok



Request a

Grab Bag!

Reserve a

Meeting Room

Access

Mobile Printing

Check out Library

of Things

Timberland Regional Library (TRL) district provides for the entertainment, information, and lifelong learning needs of Grays Harbor, Lewis, Mason, Pacific, and Thurston county residents. The library system is funded mainly by local property taxes, timber tax, fundraising efforts of TRL Friends of the Library, and generous donations by individual supporters.

For more information visit [TRL.org](#)



[View previous eNewsletters](#)

[Manage](#) your preferences | [Opt Out](#) using TrueRemove™

Got this as a forward? [Sign up](#) to receive our future emails.

View this email [online](#)

415 Tumwater Blvd. SW | Tumwater, WA 98501 US

This email was sent to .

To continue receiving our emails, add us to your address book.

[Subscribe](#) to our email list.