



## Timberland Regional Library eNewsletter

- June 2019 Edition -



### It's going to be an Out-of-this-World Summer!



Teens are encouraged to put on their best cosplay and check out their local LibraryCon, a geeky celebration of all fandoms...

**NerdiCon** - Friday, July 19, starting at 7:00 p.m. at the **Centralia Timberland Library**, 110 S Silver Street in Centralia

**HarborCon** - Saturday, July 20, starting at 6:00 p.m. at the **Aberdeen Timberland Library**, 121 East Market Street in Aberdeen

**PopCon** - Friday, August 9, starting at 6:30 p.m. at the **Shelton Timberland Library**, 710 W Alder Street in Shelton



**Summer 2019** at your local Timberland library is all about bringing exciting events and fun activities to people of **all ages** centered around a **Universe of Stories!**

Register at [trl.beanstack.org](http://trl.beanstack.org) or download the Beanstack app (available for Android and iOS) and experience our new, easy-to-use online portal!

You can also sign up with staff in any one of our 27 library locations, as well as schools, farmers markets, and many other locations in our communities where your local library staff is visiting.



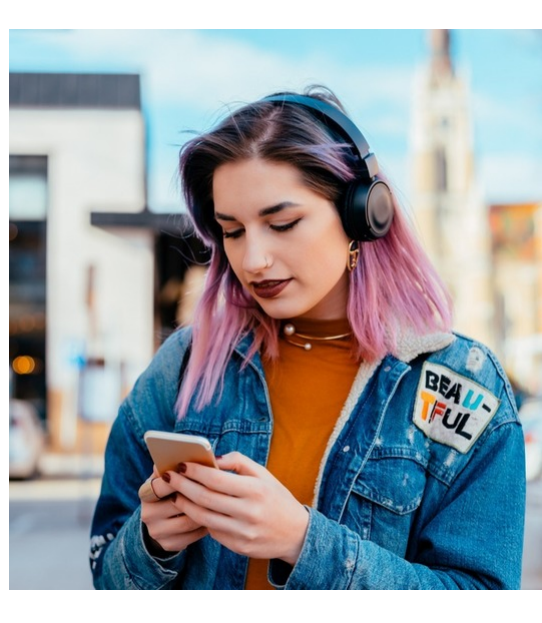
The line-up of **Out-of-this-World activities** include discovering special effects with science experiments, creating star maps and star finder wheels, building rockets, and recycling robots! You can even join us for a series of Space Odyssey Cult Classic Films in July!

For more information check **TRL's online event calendar!** Then visit any Timberland library to find free events, educational opportunities, & entertainment from magician Jeff Evans, Mr. Lizard's Mobile Reptile Zoo, Magic Mama Music, real life owls, and more!

## Congratulations to all Graduates!



### Oh, the places you'll go! Don't forget your library card...



While you're on the road, take free entertainment with you including digital magazines and audiobooks in **RBdigital**, ebooks & audiobooks with **OverDrive**, and streaming videos in **Kanopy**. Visit the **Stream & Download** page to learn how to set up your device of choice. June is audiobook month, so if you have never tried one, it's a great time to #CheckThisOut.

Enjoy the weather, get outdoors... hundreds of travel, hiking, camping, and other outdoor activity guides can be found in our library collection.

Visit the **library catalog** to search and hold titles to enjoy on your adventures!

## Change in hours for Ask A Librarian at TRL

We are making changes to better serve you, our patrons! Starting June 1st, our phone service hours will be **10 a.m. - 5 p.m. on Monday - Saturday**, aligning more closely to the hours of operation for our libraries and service center.

Have a Question for a Librarian?

For answers to factual questions, submit the **email question form** found at [TRL.org](http://TRL.org) under 'Contact Us'. If you need more immediate assistance, reach out to us by phone at 360.704.INFO (4636) or 1.800.562.6022 (outside Thurston County).



## #CheckThisOut

*"Outstanding!!! Wowza!!! ... Very Creative, all the branches should have one!" - Angelena*

Patron compliment in reference to this fabulous Anime-themed I-Spy Tank at our **Olympia Timberland Library** ... stop by and check it out!



TIMBERLAND LIBRARIES WILL BE

# CLOSED

**Thursday, July 4, 2019**  
in honor of Independence Day

Expanded Access at the McCleary Library is still available on July 4

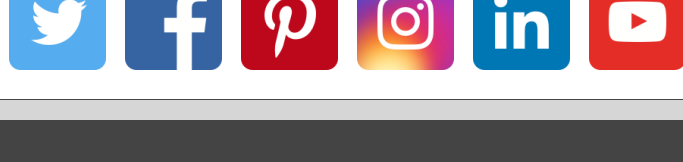
All other libraries will resume regular schedules on Friday, July 5

Check out our [Online Events Calendar](#) for what's happening at your local Timberland library!



Join in the conversation and Like, Follow, Share along with us.

Just click on the icons below:



## TRL.org

Timberland Regional Library district provides for the entertainment, information, and lifelong learning needs of Grays Harbor, Lewis, Mason, Pacific, and Thurston county residents at 27 community public libraries and seven library service partner locations. The library system is funded mainly by local property taxes, timber tax, fundraising efforts of TRL Friends of the Library, and generous donations by individual supporters. Anyone needing special accommodations to participate in a library's programs may contact the library one week in advance. All Timberland programs are free and open to the public. For more information visit [TRL.org](http://TRL.org)